

VOLCOM



WOMENS SPRING 2024



A MODERN BEACH TO
CITY LIFESTYLE BRAND
THAT EMBODIES THE
CREATIVE SPIRIT OF
YOUTH CULTURE

DARING
EFFORTLESS
WILDLY AUTHENTIC
CONFIDENT
SUNSETS AT THE BEACH
RAGING AT NIGHT IN THE CITY
A LITTLE BIT ROCK AND ROLL
SHE IS A BEAUTIFUL MESS



YOU AGAIN

VOLCOM
FEATURED
ARTIST SERIES
SINCE 1995

ARTHUR LONGO







BLK
1/15

B0412411 FA ARTHUR LONGO WOVEN SS

XS | S | M | L | XL

BLK-Black

¥	BLK
MSRP	7,800



- Button front short sleeves shirt with short length boxy fit.
- Patch pocket at wearer's left chest
- Featured artist allover print.
- "Featured artist" flag label at wearer's left side seam. Metal badge at back neckline
- Art by : Arthur Longo
- HPS : 21"

100% Cotton poplin, 130gr

B1112401 STONE KRAFT PANT

22 | 24 | 25 | 26 | 27 | 28 | 29 | 30

¥	BLK
MSRP	10,500

BLK, Black

- Relaxed straight fit
- Workwear inspired pant with hard angled hand pockets
- Back patch pockets with velcro closures at top of pocket
- Left hanger loop and right thigh utility pocket
- Tonal Stone embroidery at wearer's back left leg
- Volcom label at wearer's right back pocket
- Inseam: 31"

97% Cotton / 3% Elastane, 278gr, cotton stretch dobby



BLK
1/15

B1212409 FA ARTHUR LONGO EW PANT

XS | S | M | L | XL

¥	BLK
MSRP	8,800

- BLK, Black
- Pull on beach pants
 - Elasticated waistband and wide leg fit
 - Allover print
 - Metal badge at back
 - "Featured artist" flag label at wearer's left side seam.
 - Art by : Arthur Longo
 - Inseam: 29.5"
- 100% Viscose, 40's, 150gr



BLK
1/15





BLK
1/15

B1312416 FA ARTHUR LONGO CAMI DRESS

XS | S | M | L | XL

BLK-Black

¥	BLK
MSRP	8,500



- Cami dress elasticated at waist
- Allover print
- Metal badge at back
- "Featured artist" flag label at wearer's left side seam.
- Art by : Arthur Longo
- HPS :36"

100% Viscose, 40's, 150gr

B2012200 STN STEP HIRISE SHRT

24 | 25 | 26 | 27 | 28 | 29 | 30

¥	MOC
MSRP	7,800

- MOC, Mocha**
- High rise pigment dye boyfriend fit short with acid and enzyme wash
 - Zipper fly
 - Volcom signature denim branding
 - 4" inseam
 - 11.5" front rise
- 99% Cotton / 1% Elastane Twill, 10.6oz



MOC
1/15



BLK
1/15

B4112410 FA ARTHUR LONGO PO

XS | S | M | L | XL

BLK-Black

¥	BLK
MSRP	8,800



- Hoodie fleece short length relaxed fit.
- Bloused above cuff and bottom rib.
- Embroidered art at center front
- "Featured artist" flag label at wearer's left side seam.
- Art by : Arthur Longo
- HPS : 24,5"

57% Cotton / 28% REPREEVE recycled Polyester / 15% Polyester, 350gr, heavy fleece

B2012401 STONE KRAFT SHORT

24 | 25 | 26 | 27 | 28 | 29 | 30

¥	BLK
MSRP	6,800

- BLK, Black
- Low rise, utility short with patch pockets at front
 - Patch pockets and hammer loop at back
 - Contrast stitching
 - Stone embroidery at back
 - 3" inseam
- 97% Cotton / 3% Elastane Stretch Dobby, 278GSM



BLK
2/15

VOLCOM
FEATURED
ARTIST SERIES
SINCE 1995

PRESENTS

**TETSUNORI
TAWARAYA**

ASPHALT
BEACH



ASPHALT BEACH

I've got the
trunk filled
with aura yellow



TETSUNORI CREATURES AND
DEEP PURPLE
ONLY AGAIN



SAME
SHOES
DIFFERENT
PANTS

THE CAR IS
STILL DOWN...
AT LEAST
YOU LOOK
GOOY
☺



EMBRACE
THE STRANGE
HIGHLIGHT THE
STITCHES



I WANT ME
SOME ASPHALT
BEACH TOO





VOLCOM
FEATURED
ARTIST SERIES
SINCE 1995

PRESENTS

**TETSUNORI
TANARAYA**



BLK
2/15



LCA
2/15

B0412406 FA TETSUNORI WOVEN SS

XS | S | M | L | XL

BLK-Black

¥	BLK
MSRP	7,800



- Menswear fit button front shirt with Short sleeves, collar
- Patched pocket at wearer's left chest
- Featured artist allover print.
- "Featured artist" flag label at wearer's left side seam. Metal badge at back neckline
- Art by : Tetsunori Tawaraya
- HPS 26"

100% Viscose, 40's, 150gr

B4612403 FRENCH SURF CREW

XS | S | M | L | XL

LCA-Lilac Ash

¥	LCA
MSRP	7,800

- Crew neck loose fit fleece
- Dropped shoulder
- Screen print at center front
- Overdye finishing
- HPS : 24"

72% Cotton / 28% Polyester, 355gr



WHT
2/15



BLK
2/15

B3512414 FA TETSUNORI TEE 2

XS | S | M | L | XL

WHT-White

¥	WHT
MSRP	4,200

- Crew neck loose fit tee
- Screen print at center front
- "Featured artist" flag label at wearer's left side seam.
- Art by : Tetsunori Tawaraya
- HPS: 25"

100% cotton – Made from organic cotton, 230gr



B3512413 FA TETSUNORI TEE 1

XS | S | M | L | XL

BLK-Black

¥	BLK
MSRP	4,200

- Crew neck cropped boxy fit tee
- Screen print at wearer's left chest and back
- "Featured artist" flag label at wearer's left side seam.
- Art by : Tetsunori Tawaraya
- HPS: 19"

100% cotton – Made from organic cotton, 230gr





LCA
2/15



BLK
2/15

B3512410 DRUMSTONE TEE

XS | S | M | L | XL

LCA-Lilac Ash

¥	LCA
MSRP	3,900



- Crew neck cropped boxy fit tee
- Screen print at center front and at back
- Art by rider Madeleine Larcheron
- HPS: 19"

100% cotton – Made from organic cotton, 160gr

B2812402 ASPHALT ROMPER

XS | S | M | L | XL

BLK-Black

¥	BLK
MSRP	12,000

- Short sleeves mini short romper with collar shirt.
- Hidden button front at center front closure
- Removable belt with metal double D closure at waist.
- Welt pocket at wearer's left chest. Lower slant pocket at front. Welt pockets at back.
- Art printed and embroidered at wearer's left chest and at back.
- "Featured artist" flag label at wearer's left side seam.
- Art by : Tetsunori Tawaraya
- Top of body length from HPS : 17"
- Inseam : 2.25"

100% Cotton drill twill, 280gr

B1912301 WEELLOW DENIM
24 | 25 | 26 | 27 | 28 | 29 | 30

¥	SWH
MSRP	9,800

- SWH, Star White
- Five pocket high rise loose fit cropped denim pant
 - V belt loop at center back waistband
 - Closure with metal buckle button and metal zipper
 - Denim label at back
 - Volcom script embroidery at back right patched
 - 17.5 " leg opening
 - 28" inseam
- 100% Cotton, 11oz, Rigid Bull Denim



SWH
2/15





BLK
2/15



BLK
2/15

B1412404 SURFPUNK SKIRT

XS | S | M | L | XL

BLK-Black

¥	BLK
MSRP	6,800

- Mini skirt fit with button front.
- Pleat at front. Smocked elastic waistband at back.
- Allover print
- Metal badge at back
- Length : 18"

100% Viscose, 150G, 40'S

B1312418 SURFPUNK SS SHIRT DRESS

XS | S | M | L | XL

BLK-Black

¥	BLK
MSRP	8,500

- Mini tea dress with short sleeves
- Crew neck. Yoke details at shoulder and under chest with gather.
- Key hole at center front
- Zip closure at middle back
- Metal badge at back
- HPS : 33 "

100% Viscose, 150G, 40'S



BLK
2/15



AUR
2/15

B1312417 FA TETSUNORI DRESS

XS | S | M | L | XL

BLK-Black

¥	BLK
MSRP	8,500



- Mini tea dress with short sleeves
- Cut-out details at shoulder.
- Zip closure at middle back
- Allover print
- Metal badge at back
- "Featured artist" flag label at wearer's left side seam.
- Art by : Tetsunori Tawaraya
- HPS : 33''

100% Viscose, 40's, 150gr

B0912408 SURFPUNK SHORT

XS | S | M | L | XL

AUR-Aura Yellow

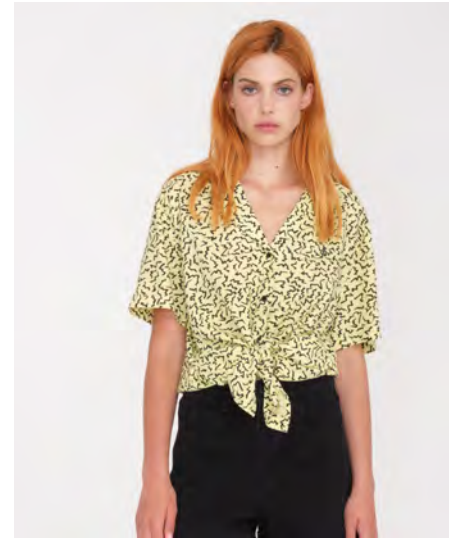
¥	AUR
MSRP	5,200

- Pull on short
- Smocking at waistband with drawcord and slash pockets
- Allover print
- Metal badge at back neckline
- Inseam: 3.5"
- Outseam: 12"

100% Viscose, 150gr, 40'S



BLK
2/15



AUR
2/15

B0512402 ASPHALT SHIRT LS

XS | S | M | L | XL

BLK-Black

¥	BLK
MSRP	9,800

- Loose fit button front shirt
- Shirt collar, long sleeves
- Metallic ring snap buttons at front and cuffs
- Volcom patch at wearer's left chest
- HPS :27"

100% Cotton drill twill, 280gr

B0412407 SURFPUNK WOVEN SS

XS | S | M | L | XL

AUR-Aura Yellow

¥	AUR
MSRP	8,200

- Oversized fit button front shirt tunic
- Short sleeves, collar, lapel and shirt tailed hemline
- All over print
- Stone embroidered at chest and metal badge at back neckline
- HPS 32"

100% Viscose, 40's, 150gr

THIS THAT THEM

SKATE  PANT

FEMALE DESIGNED. GLOBALLY INSPIRED. ROAD TESTED.



MONICA TORRES

LOIRE
BRUGGEMAN

B1212404 THISTHATTHEM SKATE

24 | 25 | 26 | 27 | 28 | 29 | 30

¥	GUV	TOF
MSRP	8,800	8,800

GUV, Guava

- Relaxed fit pant with raw edge bottom opening
- Fixed front with chino buckle button and elasticated back waistband
- Deep, side entry pockets and front Wax Pocket under waistband at front
- Welt pockets at back
- Stone embroidery at back leg and Volcom clamp label at back pocket
- 27" inseam
- 11.5" Rise

60% Cotton / 40% Polyester Heavy Twill, 280GSM

TOF, Toffee

- Relaxed fit pant with raw edge bottom opening
- Fixed front with chino buckle button and elasticated back waistband
- Deep, side entry pockets and front Wax Pocket under waistband at front
- Welt pockets at back
- Stone embroidery at back leg and Volcom clamp label at back pocket
- 27" inseam
- 11.5" Rise

59% Cotton / 39% Polyester Repreve / 2% Elastane Herringbone Yarn Dye



GUV
2/1



TOF
2/1



VOLCOM
ECO TRUE
SWIM COLLECTION

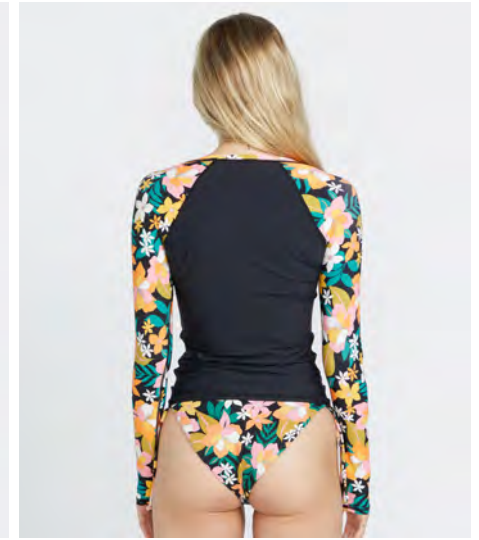
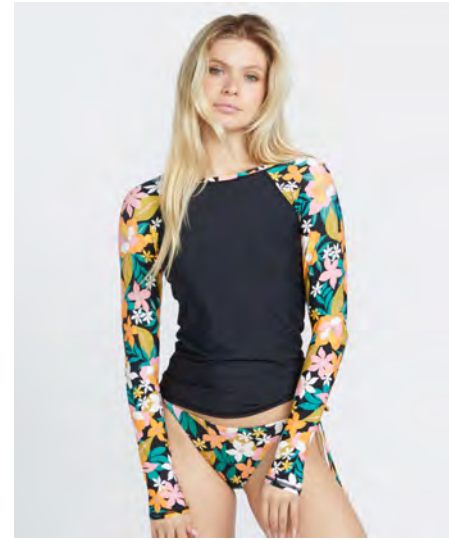
SIMPLY *Made with*
SOLID **ECONYL®**
ENDLESS POSSIBILITIES







BLK C/O
3/1



MLT
3/1

00312301 SIMPLY CORE LS

XS | S | M | L

BLK-Black

¥	BLK
MSRP	5,200



- Pull over long sleeve raglan rashguard
- Deadly Stones screenprint down wearer's right arm
- UPF 50+
- Eco-True: made with Repreve

86% Polyester / 14% Elastane Tricot

00312400 HAD ME AT ALOHA LS RASHGUARD

XS | S | M | L | XL

MLT-Multi

¥	MLT
MSRP	7,800



- Pull over long sleeve raglan rashguard with contrast printed sleeves
- Deadly Stones screenprint down wearer's right arm
- UPF 50+
- Eco-True: Made with Greenlon®

87% Greenlon Recycled Nylon / 13% Elastane Soft Jersey



BLK
3/1



BLK C/O
3/1

00812301 SIMPLY SOLID 2

XS | S | M | L | XL

BLK-Black

¥	BLK
MSRP	4,800

- Elastic smocked waist pull on boardshort with velcro closure back pocket with embroidery hole for drainage
- Volcom Stone rubber patch at wearer's left leg
- 2" inseam
- UPF 50+
- Eco-True: Made with Repreve

55% Polyester / 37% Repreve Polyester / 8% Elastane
4-way Stretch



00812302 SIMPLY SOLID 5

0 | 1 | 1 | 3 | 5

BLK-Black

¥	BLK
MSRP	5,200

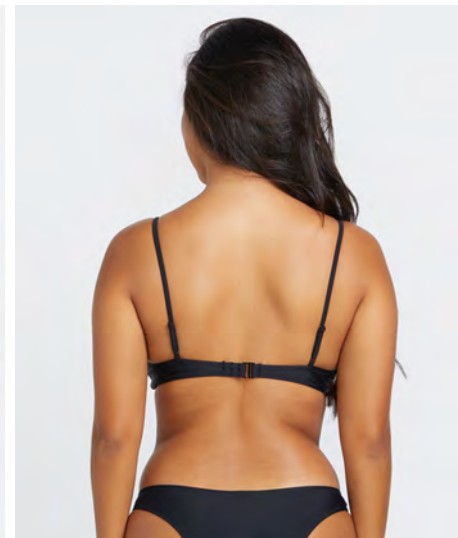
- Cinch Fly Boardshort with Stone fly stitch detail with velcro closure back pocket with embroidery hole for drainage
- Volcom Stone rubber patch at wearer's left leg
- Volcom branded metal grommets at Cinch Fly
- 5" inseam
- UPF 50+
- Eco-True: Made with Repreve

55% Polyester / 37% Repreve Polyester / 8% Elastane
4-way Stretch





MLT
3/1



BLK
3/1

00812400 HAD ME AT ALOHA 2

XS | S | M | L | XL

MLT-Multi

¥	MLT
MSRP	4,800



- Elastic smocked waist pull on boardshort with velcro closure back pocket with embroidery hole for drainage
- Volcom Stone rubber patch at wearer's left leg
- 2" inseam
- UPF 50+
- Eco-True: Made with Repreve®

55% Polyester / 37% Repreve Polyester / 8% Elastane
4-way Stretch

01012400 SIMPLY SOLID CROP

XS | S | M | L | XL

BLK-Black

¥	BLK
MSRP	5,500

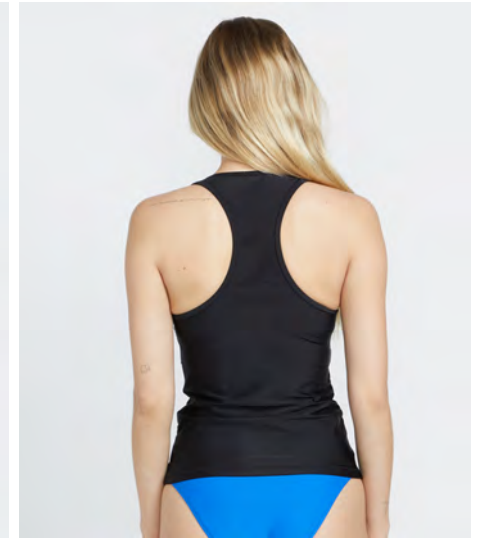
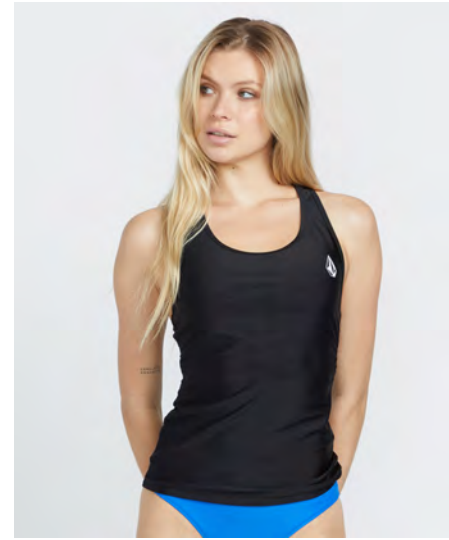


- Scoop Neck top with adjustable over the shoulder straps and a hook closure at wearer's back
- Removable bra cups
- Volcom logo metal badge at wearer's front left hem
- Made of Italian fabric
- Eco-True: Made with Econyl® & Repreve®

78% Econyl Regenerated Nylon / 22% Elastane Tricot.
Lining: 92% Repreve Recycled Polyester / 8% Elastane



BLK
3/1



BLK
3/1

01012401 SIMPLY SEAMLESS HIGH CROP

XS | S | M | L | XL

BLK-Black

¥	BLK
MSRP	5,200



- High Neck Pull Over top with front cutout and adjustable tie at center front
- Removable bra cups
- Volcom logo metal badge at wearer's front left hem
- Eco-True: Made with Repreve®

74% Repreve Polyester / 26% Elastane Jersey

01612300 SIMPLY CORE TANKINI

XS | S | M | L | XL

BLK-Black

¥	BLK
MSRP	4,800



- Pull over racerback Tankini top with floating shelf bra
- Removable bra cups
- Volcom Stone screenprint at wearer's left chest
- UPF 50+

86% Polyester / 14% Elastane Tricot. Lining: 95% Polyester / 5% Elastane Pique

SWIM BOTTOMS FIT GUIDE



TINY



CHEEKINI



HIGH WAIST CHEEKY



SKIMPY



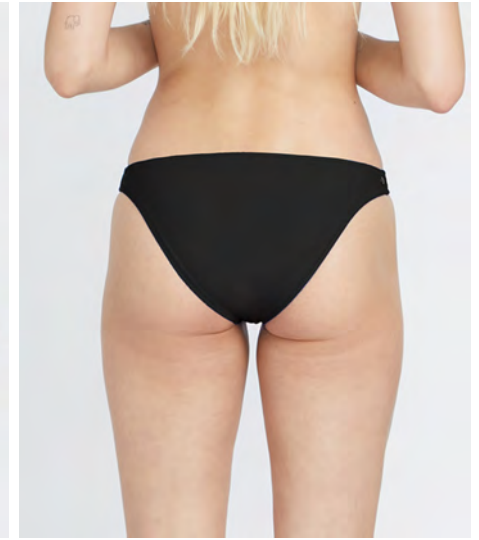
V BOTTOM



FULL COVERAGE



BLK
3/1



BLK
3/1

02012400 SIMPLY SEAMLESS HIGH WAIST

XS | S | M | L | XL

BLK-Black

¥	BLK
MSRP	4,800

- Pull on High Waist Bottom
- Cheeky coverage
- Volcom logo metal badge at wearer's back right hip
- Eco-True: Made with Repreve®

74% Repreve Polyester / 26% Elastane Jersey



02212400 SIMPLY SOLID FULL

XS | S | M | L | XL

BLK-Black

¥	BLK
MSRP	4,800

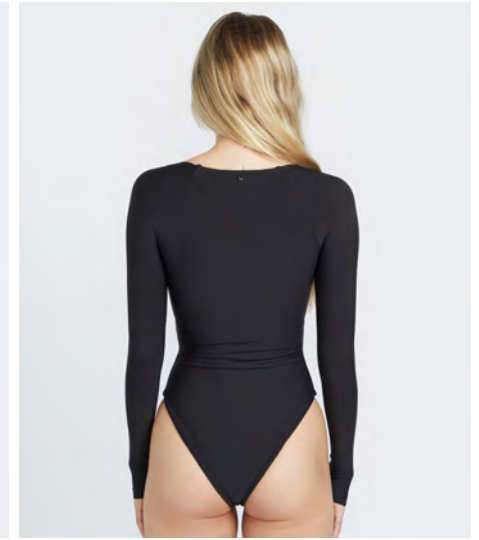
- Pull on Full Bottom
- Full coverage
- Volcom logo metal badge at wearer's back right hip
- Made of Italian fabric
- Eco-True: Made with Econyl® & Repreve®

78% Econyl Regenerated Nylon / 22% Elastane Tricot,
Lining: 92% Repreve Recycled Polyester / 8% Elastane





BLK
3/1



BLK
3/1

03012400 SIMPLY SEAMLESS 1PC

XS | S | M | L | XL

BLK-Black

¥	BLK
MSRP	8,800

- Strappy One Piece with adjustable shoulder straps
- Skimpy coverage
- Volcom logo metal badge at wearer's center back
- Eco-True: Made with Repreve®

74% Repreve Polyester / 26% Elastane Jersey



03012401 SIMPLY SEAMLESS SURF SUIT

XS | S | M | L | XL

BLK-Black

¥	BLK
MSRP	11,000

- Pull on long sleeve Bodysuit with linked front and cutout detail
- Skimpy coverage
- Volcom logo metal badge at wearer's center back neck
- Eco-True: Made with Repreve®
- UPF 50+

74% Repreve Polyester / 26% Elastane Jersey

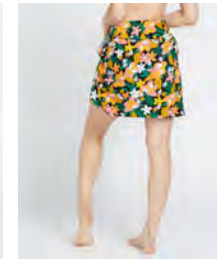




MLT
3/1



BLK
3/1



MLT
3/1

03012402 HAD ME AT ALOHA 1PC

XS | S | M | L | XL

MLT-Multi

¥	MLT
MSRP	12,000

- Strappy One Piece with with V wire at center front and adjustable shoulder straps
- Skimpy coverage
- Volcom logo metal badge at wearer's center back

66% Recycled Nylon / 26% Nylon / 8% Jersey. Lining:
92% Recycled Polyester Polyester / 8% Elastane

06012400 WHICH WAY SARONG

O/S

BLK-Black, MLT-Multi

¥	BLK	MLT
MSRP	3,900	3,900

- Sarong with tie closure
- Volcom logo metal badge at wearer's center back

100% Viscose

VOLCOM



sandals

womens
2024





TRULY SOFTER

with a thicker footbed and

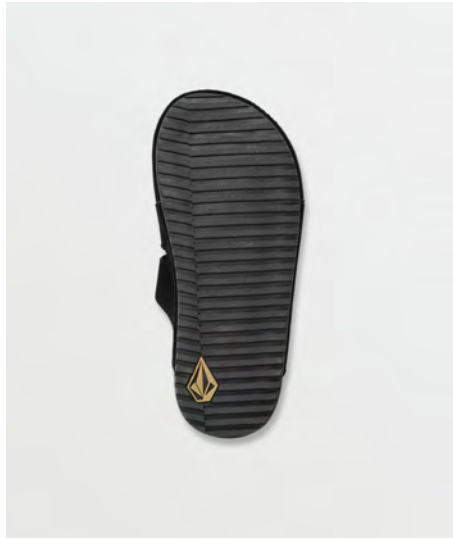
VOLCOM

arch support for

TRUE COMFORT

VOLCOM
RECLINER
COMFORT
FOAM
sandals

Featured on select styles.



BLK
3/1



TAN
3/1

W0812405 STONE CLOGGER WS

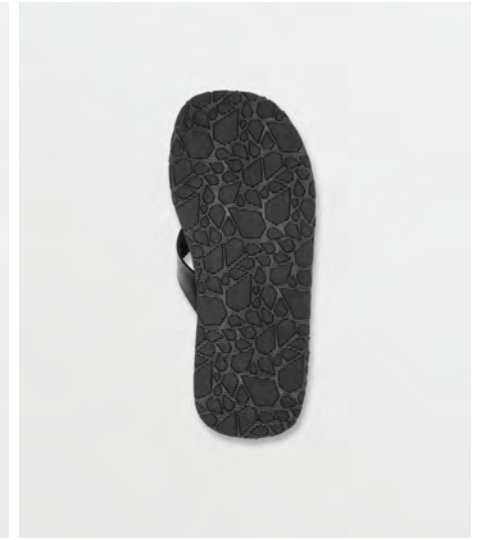
6 | 7 | 8 | 9

BLK-Black, TAN-Tan

¥	BLK	TAN
MSRP	9,000	9,000

- Faux Suede Upper with Logo Pin Detailing
- Elastic Strap for Ultimate Fit
- Hidden Tongue Zipper Pocket
- Non-Scuff Molded Rubber Outsole

Recliner Comfort Foam PU Footbed with Molded Pillows



BLK C/O
3/1



WHT
3/1

W0812304 NOT UR MOMS PLATFORM

5 | 6 | 7 | 8 | 9

BLK-Black, WHT-White

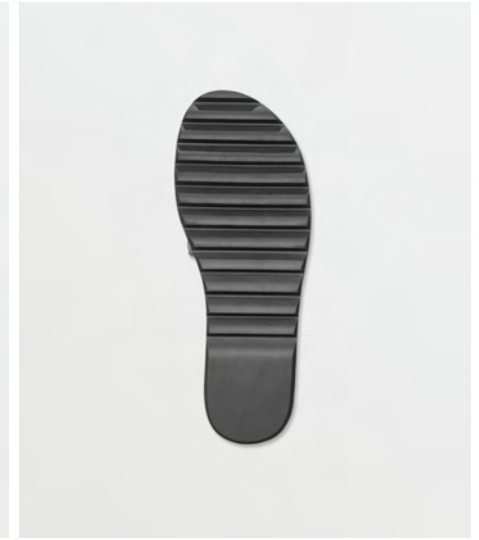
¥	BLK	WHT
MSRP	6,000	6,000

- One Piece Synthetic Leather Upper
- Platform Height
- Added Molded Arch Support
- Rubber Sponge Outsole

Recliner Comfort Foam Footbed



BLK
3/1



BLK
3/1

W0812403 VOLCOM SQUARED

5 | 6 | 7 | 8 | 9

BLK-Black

¥	BLK
MSRP	6,000

- 1" / 25mm Platform Height
- Hook and Loop Adjustable Upper Straps With logo Emboss Detail
- Water Friendly Synthetic Nubuck Upper
- Non-Scuff Molded Sponge Rubber Outsole

Geta Shaped Recliner Comfort Foam Footbed

W0812404 NOT SO SIMPLE SLIDE

5 | 6 | 7 | 8 | 9

BLK-Black

¥	BLK
MSRP	5,500

- 1.2in / 30mm Platform Height
- Padded Lining For Comfort
- Synthetic Leather Slide Sandal with Elastic Stone Cutout for Adjustability
- Rubber Sawtooth Outsole

Recliner Comfort Foam Footbed



BLK
3/1



SIL
3/1

W0812353 EASY BREEZY II

5 | 6 | 7 | 8 | 9

BLK-Black, SIL-Silver

¥	BLK	SIL
MSRP	3,500	3,500

- Synthetic Leather Criss Cross Strap Upper
- Logo Pin Branding
- Added Molded Arch Support
- Rubber Sponge Outsole

Recliner Comfort Foam Footbed