



**WINTER  
COLLECTION**  
AW22/23

**BLIZ**



# THE BLIZ CORE

## DESIGN

Swedish design which is at the cutting edge in function, technology and appearance. Carefully developed, quality-assured products which meet the necessary standards and requirements.

## FLEXIBILITY

High technical and functional level. The product's functionality and the accessories available combine to provide an unbeatable versatility and flexibility.

## VALUE

Bliz Active's advantageous pricing, along with the flexibility of the products and the accessories which are included in the price or can be purchased separately, provide unbeatable value for consumers.











**NANO OPTICS™**

By combining different materials into one single lens, Nano Optics™ gives you a superb vision with minimal distortion. Nano Optics™ also has an integrated unique long lasting anti-fog.

Available in three different lens types.







MINIMAL DISTORTION | NANO ANTI-FOG

**NANO OPTICS™** - gives you a superb vision with minimal distortion. NanoOptics™ also has an integrated long lasting anti-fog.



EXTREME CONTRAST | MINIMAL DISTORTION | NANO ANTI-FOG

**NORDIC LIGHT™** is a unique high tech lens which considerably enhances the contrasts and colors, giving you clear and crisp vision in low light conditions and flat light. The lens removes the blurry colors between the blue and green, and between the green and red wavelengths. These selected colors are blocked by the Nordic Light lens, resulting in a noticeable improvement in contrasts and sharpness even during the toughest weather conditions. Reveal your true environment with Bliz. The lenses come in two options; Coral in Filtcat 1 and Begonia in Filtcat 2.



PHOTOCROMIC | MINIMAL DISTORTION | NANO ANTI-FOG

**THE PHOTOCROMIC** lens keeps you ready for most situations. The lens changes with the weather conditions, from a light filter category 1 lens which is great for night time or cloudy weather, to a dark category 4 lens suitable for sunny conditions.





NANO OPTICS™

# GOGGLES

## SINGLE-DOUBLE LENS TECHNOLOGY

---

Welcome to Bliz Nano Optics™. A revolution in the world of ski goggles. In the Nano Optics™ lens, you get it all. Fantastic optical clarity and outstanding fog resistance – in one ski goggle lens! How is that even possible? It's done with our Single-Double lens. A traditional double lens uses an insulating air gap between the inner and outer lens. That way, fogging is reduced. But that also means a bit of light refraction and visual distortion. Something that you want to avoid if it's possible.

The Nano Single-Double lens is made from two different materials. They are laminated together with an advanced Nano sealant. This effectively minimizes light refraction and gives you minimal visual distortion. The Nano Optics™ lens also has embedded anti-fog treatment, providing significantly better fog protection than a normal double lens.

When you're riding down the slopes, you get one of the clearest experiences you have ever had with a pair of ski goggles. Taking optical preciseness to a new level. Try Nano Optics™ - your eyes will thank you.





**NANO OPTICS™**

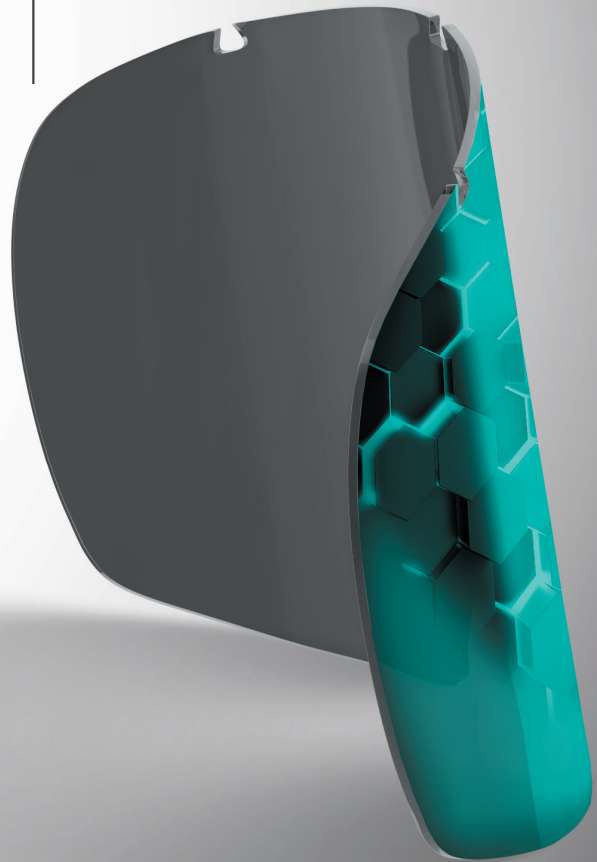
**Standard double-lens**

An insulating air gap between the inner and outer lens



**Nano Optics™ single-double lens**

Laminated together with an advanced Nano sealant







## NORDIC LIGHT™ - EXTREME CONTRAST

Born and raised in the north. Shaped and molded by harsh and unforgiving environments. Approved by the real natives of Scandinavia. This is what led to the creation of Nordic Light.

Nordic Light™ is a unique high tech lens which considerably enhances the contrasts and colors, giving you clear and crisp vision in low light conditions and flat light. The lens removes the blurry colors between the blue and green, and between the green and the red wave-lengths.

These selected colors are blocked by the Nordic Light lens, resulting in a noticeable improvement in contrasts and sharpness, even during the toughest weather conditions. Reveal your true environment.

Testing things in laboratory conditions is great. But what does that say about user experience? We have had the world elite in cycling and cross country skiing testing the lenses in the toughest possible environment. After getting their feedback, this is the result. Nordic Light™.



### Nordic Light

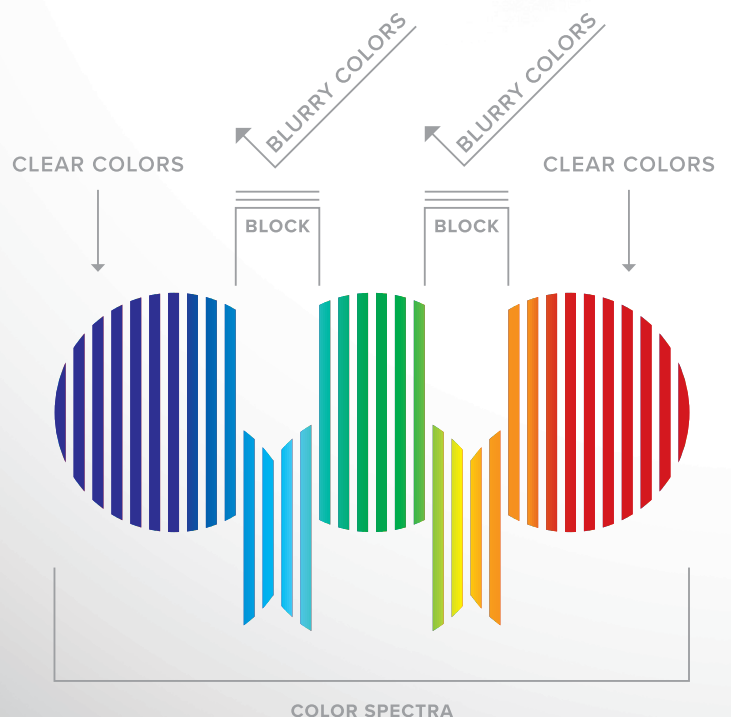
The blurry colors are blocked by the Nordic Light lens, providing the carrier greater contrast and clarity.

### Standard lens

Unfiltered and blurry colors.

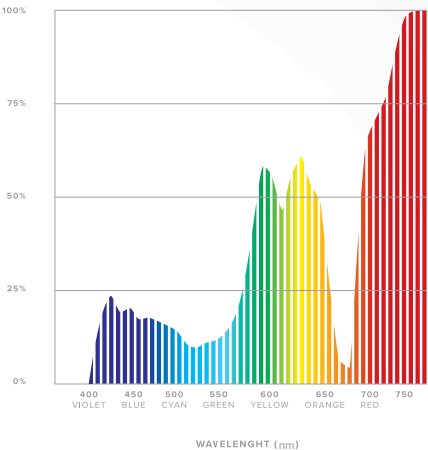
## REMOVE TO IMPROVE

Your eyes are amazing – but not always perfect. It's difficult to distinguish colors between the blue and the green, and the green and the red wavelengths. These crossovers are blocked by the Nordic Light™ lens, providing the carrier greater contrast and clarity in tough conditions.





# DIFFERENT LENSES



## BEGONIA- VIOLET

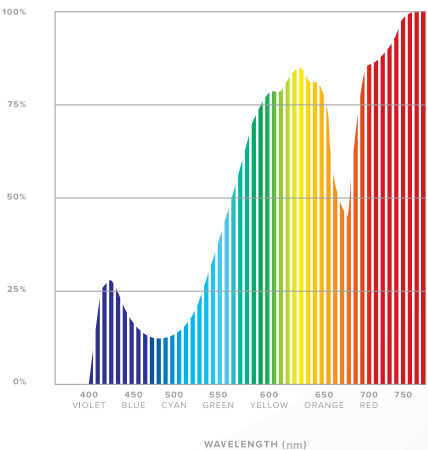
Light transmission: 25-28%  
Category: 2  
Mirror: Blue multicoating  
Hydrophobic & Oleophobic



Innovative allround lens with game changing characteristics. The recipe pops the contrasts and blocks the faded colors in between. The lens is a violet filt.cat 2 lens. It cuts out parts of red light and vastly enhances flat light visibility. Additionally, it also blocks out destructive UV-light.

The filt.cat 2 makes this a great lens in every environment and every weather condition. Glare from the sun is cut by the multi coated color. Compared to the Coral lens, this lens works best in varying weather conditions.

## NORDICLIGHT BEGONIA LENS



## CORAL - AMBER

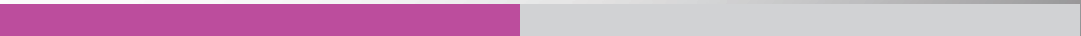
Light transmission: 49-51%  
Category: 1  
Mirror: Blue  
Hydrophobic & Oleophobic



Groundbreaking filt.cat 1 lens that enhances contrasts and blocks out destructive UV-light. These lenses cut out the blurry light in between the clear colors. Leaving the clear colors gives your eyes more comfort and better vision. The experience is that your visual perception is boosted and you see contrasts more clearly.

The soft and relaxing amber color gives your eyes the relaxation and contrast needed to keep focused all day long, especially in bad weather conditions.

## NORDICLIGHT CORAL LENS



# FLOW



## FLOW

### The Look of Speed

Flow ski goggles have long been one of the top models in Bliz range - and it's not hard to understand why. An appreciated and excellent model for alpine skiing and free-skiing. Flow has both a double lens with a wide field of view in high optical quality and a ventilated frame - no worries about fog and condensation. The outer lens is in durable Polycarbonate with 100% UV-protection, inner lens in Acetate. The head strap comes with silicone for a safe and comfortable placement on the helmet. 3-layer foam with fleece provides high comfort, and you can wear your regular glasses underneath during OTG adjustment. With Flow, you maintain high speed on the slopes without missing anything.

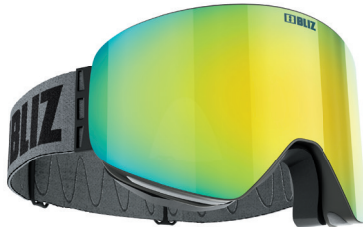
### Technical information

- 100 % UV protection
- Double lens, inner lens in Acetate with anti-fog and outer lens of Polycarbonate
- 3 Layer foam
- Ventilated frame
- Strap with silicone to keep your goggles in place over your helmet
- Soft pouch included

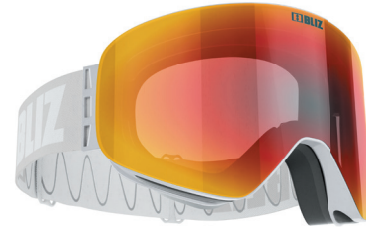




MULTI LENS / EXTRA LENS  
13  
PRICE  
MARK



**Flow 37146-19**  
**Frame:** Matt Black  
**Lens:** Brown w Gold Multi  
**Filt.cat:** 2 **VLT:** 26%  
**Spare Lens:** Yellow



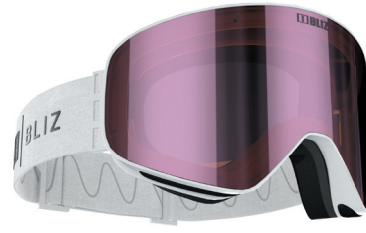
**Flow 37147-84**  
**Frame:** Matt Light Grey  
**Lens:** Brown w Red Multi  
**Filt.cat:** 3 **VLT:** 17%  
**Spare Lens:** Pink



MULTI / MIRROR LENS  
11  
PRICE  
MARK



**Flow 37120-14**  
**Frame:** Matt black  
**Lens:** Brown with ice pink multi  
**Filt.cat:** 3 **VLT:** 14%



**Flow 37122-04**  
**Frame:** Matt white  
**Lens:** Smoke with pink multi  
**Filt.cat:** 3

MULTI / MIRROR LENS  
11  
PRICE  
MARK



**Flow 37120-33**  
**Frame:** Matt blue  
**Lens:** Brown with blue multi  
**Filt.cat:** 3 **VLT:** 14%



**Flow 37122-11**  
**Frame:** Matt black  
**Lens:** Smoke with silver mirror  
**Filt.cat:** 3

## SPARE PARTS



PRICE  
MARK 5  
**37L-4**  
**Lens:** Pink  
**Filt.cat:** 1 **VLT:** 73%



PRICE  
MARK 6  
**37L-29**  
**Lens:** Brown w gold multi  
**Filt.cat:** 2 **VLT:** 26%

# OTG Charge



## CHARGE OTG

### Goggles built for glasses

Got glasses? This is the obvious choice for you. We haven't adapted Charge OTG to fit your eye glasses – we designed them around your glasses. With a deeper frame and larger distance between your eyes and the lens of the goggles, your regular eye glasses will fit perfectly. The goggles have a spherical double lens with anti fog-coating and adjustable head band. Wear your eye glasses as usual with Charge OTG. All the regular comfort and safety – without any compromises.

### Technical information

- OTG - Over the glasses
- 100 % UV-protection
- Double lens, inner lens in Acetate with anti-fog and outer lens of Polycarbonate
- 3 Layer foam
- Ventilated frame
- Strap with silicone to keep your goggles in place over your helmet
- Soft pouch included



OTG  
PRICE  
MARK 11



**Charge 48122-04**  
**Frame:** Matt White  
**Lens:** Brown w red multi  
**Filt.cat:** 3 **VLT:** 13%



**Charge 48122-11**  
**Frame:** Matt Black  
**Lens:** Smoke  
**Filt.cat:** 3

OTG  
PRICE  
MARK 11



**Charge 48122-13**  
**Frame:** Matt Black  
**Lens:** Light orange with blue multi  
**Filt.cat:** 1 **VLT:** 50%



**Charge 48122-33**  
**Frame:** Matt dark blue  
**Lens:** Brown w Blue Multi  
**Filt.cat:** 3 **VLT:** 16%



PRICE  
MARK 5

**48L-4**  
**Lens:** Pink  
**Filt.cat:** 1 **VLT:** 73%



PRICE  
MARK 6

**48L-83**  
**Lens:** Light orange w blue multi  
**Filt.cat:** 1 **VLT:** 50%

# split



## SPLIT

### Magnetic Quick Change Lens

Three, two, one, Switch! Split Nano Optics™ makes lens replacement more fun and now easier than ever. Split Nano Optics™ has a Nano Optics™ single lens with no refractive error or light refraction. The Nano Optics™ lens combines all the best features of a single lens for superior visibility and clarity. With 100% UV protection. Ventilated frame and 3-layer foam with fleece for exceptional comfort in the slopes. Silicone-treated strap with adjustable buckles. OTG customization lets you wear your regular glasses underneath. Bring Split Nano Optics™ on alpine skiing and free-skiing and enjoy the smooth lens change solution.

### Technical information

- Magnetic lens construction for super easy lens changing
- Extra contrast lens included
- 100 %-UV-protection
- 3 layer foam
- Ventilated frame
- Strap with silicone to keep your goggles in place over your helmet
- Soft pouch included





NanoOptics™  
15  
PRICE  
MARK



**Split** 41160-04

**Frame:** Matt white

**Lens:** NanoOptics™ Brown with red multi

**Spare lens:** Pink. Filt.cat 1

**Filt.cat:** 3 **VLT:** 15%



NanoOptics™  
15  
PRICE  
MARK



**Split** 41160-13

**Frame:** Matt black

**Lens:** NanoOptics™ Brown with blue multi

**Spare lens:** Pink. Filt.cat 1

**Filt.cat:** 3 **VLT:** 18%



# RAVE



## RAVE

### Every run counts

Enjoy every ride! With Rave, you can descend every slope with full focus. Rave has a double lens (single lens - Nano Optics™) that prevents fog and condensation. The durable outer lens is made of Polycarbonate and has 100% UV protection. The inner lens in Acetate is treated with efficient anti-fog protection. The frame is ventilated and has a 3-layer foam with fleece lining for the best comfort on the slopes. Silicone-treated strap with good adjustment possibilities holds Rave on the helmet. Rave is an OTG model suitable for alpine skiing and free-skiing. Did you know - with Rave JR, your kids can look as cool as you on the ski slope!

### Technical information

- Match parent-kid with Rave Jr.
- 100 % UV-protection
- Double lens, inner lens in Acetate with anti-fog and outer lens of Polycarbonate
- 3 Layer foam
- Ventilated frame
- Strap with silicone to keep your goggles in place over your helmet
- Soft pouch included

### SPARE PARTS



PRICE  
MARK 5

**42L-4**  
Lens: Pink  
Filt.cat: 1 VLT: 73%



PRICE  
MARK 6

**42L-83**  
Lens: Light orange w blue multi  
Filt.cat: 1 VLT: 50%

### SPARE PARTS



PRICE  
MARK 8

**42L-235**  
Lens: Brown w blue multi  
Filt.cat: 3 VLT: 18%



PRICE  
MARK 8

**42L-835**  
Lens: Orange w blue multi  
Filt.cat: 1 VLT: 50%



NanoOptics™ Photochromic  
18  
PRICE  
MARK



**Rave 42180-13P**  
**Frame:** Matt black  
**Lens:** NanoOptics™/ Photochromic  
Orange with blue multi  
**Filt.cat:** 1-3 VLT: 74-13%

NanoOptics™ Nordic Light  
13  
PRICE  
MARK



**Rave 42140-13N**  
**Frame:** Matt black  
**Lens:** NanoOptics™ Nordic  
Light Orange with blue multi  
**Filt.cat:** 1 VLT: 49%

NanoOptics™  
12  
PRICE  
MARK



**Rave 42130-03S**  
**Frame:** Matt white  
**Lens:** NanoOptics™ Brown with blue multi  
**Filt.cat:** 3 VLT: 18%



**Rave 42130-13S**  
**Frame:** Matt black  
**Lens:** NanoOptics™ Light Orange with blue multi  
**Filt.cat:** 1 VLT: 50%

MULTI / MIRROR LENS  
11  
PRICE  
MARK



**Rave 42120-71**  
**Frame:** Matt camo green  
**Lens:** Smoke with silver mirror  
**Filt.cat:** 3 VLT: 9%



**Rave 42122-14**  
**Frame:** Matt black  
**Lens:** Brown with red multi  
**Filt.cat:** 3 VLT: 13%



**Rave 42121-39**  
**Frame:** Matt mint  
**Lens:** Brown with pink multi  
**Filt.cat:** 3 VLT: 13%

# RAVE



## RAVE JR.

### Every run counts - Even for Kids

Enjoy every ride! With Rave JR, you can descend every slope with full focus. Rave JR has a double lens that prevents fog and condensation. The durable outer lens is made of Polycarbonate and has 100% UV protection. The inner lens in Acetate is treated with efficient anti-fog protection. The frame is ventilated and has a 3-layer foam with fleece lining for a comfortable ride on the slopes. Silicone-treated strap with good adjustment possibilities holds Rave JR on the helmet. Rave JR is an OTG model suitable for alpine skiing and free-skiing. Did you know - with Rave, your parents can look as cool as you on the ski slope!

### Technical information

- Match parent-kid with Rave Senior
- 100 %-UV-protection
- Double lens, inner lens in Acetate with anti-fog and outer lens of Polycarbonate
- 3 Layer foam
- Ventilated frame
- Strap with silicone to keep your goggles in place over your helmet
- Soft pouch included





MULTI / MIRROR LENS  
8  
PRICE  
MARK



**Rave JR 43092-04**  
Frame: Matt White  
Lens: Brown with pink multi  
Filt.cat: 3 VLT: 13%



**Rave JR 43090-13**  
Frame: Matt black  
Lens: Light orange with blue multi  
Filt.cat: 1 VLT: 50%

MULTI / MIRROR LENS  
8  
PRICE  
MARK



**Rave JR 43090-14**  
Frame: Matt black  
Lens: Brown with blue multi  
Filt.cat: 3 VLT: 16%



**Rave JR 43092-31**  
Frame: Matt dark blue  
Lens: Smoke with silver mirror  
Filt.cat: 3 VLT: 9%

MULTI / MIRROR LENS  
8  
PRICE  
MARK



**Rave JR 43091-39**  
Frame: Matt mint  
Lens: Brown with pink multi  
Filt.cat: 3 VLT: 13%



**Rave JR 43092-49**  
Frame: Powder pink  
Lens: Brown with pink multi  
Filt.cat: 3 VLT: 13%

CONTRAST LENS  
7  
PRICE  
MARK



**Rave JR 43071-18**  
Frame: Matt black  
Lens: Orange  
Filt.cat: 2 VLT: 25%

## SPARE PARTS



PRICE  
MARK 5  
**43L-4**  
Lens: Pink  
Filt.cat: 1 VLT: 73%

# SWITCH



## SWITCH

### Choose your ski mode

Switch is the next generation of ski goggles. Switch lets you customize fit and airflow more than ever before — adjustable airflow and nose. The switch is equipped with a unique NANO OPTICS™ single lens without any refractive error or light refraction. The NANO OPTICS™ lens combines the very best features in a single lens for unmatched visibility and clarity. With 100% UV protection. The side clips are adjustable in three positions to fit every helmet perfectly. Soft 3-layer foam with fleece for maximum comfort and easily replaceable lens. Silicone-treated strap and OTG-adapted for your regular glasses. Perfect for alpine skiing and free-skiing. Switch is the go-to choice when you refuse to compromise.

### Technical information

- Super easy lens change system
- Adjustable ventilation
- Adjustable nose part
- Lockable side clip in 3 positions
- 100 % UV protection
- 3 Layer foam
- Strap with silicone to keep your goggles in place over your helmet
- Soft Pouch included



SWITCH  
PRODUCT OVERVIEW



SWITCH NANO OPTICS  
PRICE MARK 18



**Switch 40189-04S**  
**Frame:** Matt White  
**Lens:** Nano Optics Brown w Red Multi  
**Filt.cat:** 2 **VLT:** 39%



**Switch 40189-13S**  
**Frame:** Matt Black  
**Lens:** Nano Optics Brown w Blue Multi  
**Filt.cat:** 3 **VLT:** 16%

SPARE  
PARTS



PRICE  
MARK 7

**40L-4**  
**Lens:** Pink  
**Filt.cat:** 1 **VLT:** 73%



PRICE  
MARK 9

**40L-24S**  
**Lens:** Brown w Red Multi  
**Filt.cat:** 2 **VLT:** 39%



# SPARK



## SPARK

### Cylindrical Precision

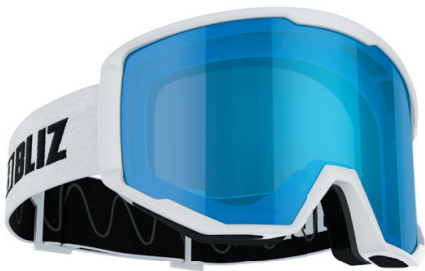
The Spark ski goggle is a reliable model with great performance. Ventilated frame and double lens of high optical quality will save you from fog and condensation. Outer lens in unbreakable X-PC with 100% UV-protection and inner lens in Acetate. Spark is an OTG model, so you can easily have your regular glasses under your goggles. 2-layer foam with fleece gives you high comfort. The wide silicone-treated neck strap is easily adjusted so that Spark sits as glued even during tough runs. A great model for alpine skiing and freeriding.

### Technical information

- 100 % UV-protection
- Double lens, inner lens in Acetate with anti-fog and outer lens of Polycarbonate
- 3 Layer foam
- Ventilated frame
- Strap with silicone to keep your goggles in place over your helmet
- Soft pouch included



MUTLI LENS  
10  
PRICE  
MARK



**Spark 49102-03**  
**Frame:** White  
**Lens:** Smoke with blue multi  
**Filt.cat:** 3



**Spark 49102-14**  
**Frame:** Black  
**Lens:** Brown with red multi  
**Filt.cat:** 3

# INFINITY



## INFINITY

Light, cool, comfort

Keep your cool with Infinity. Thanks to the Airflow Ventilation System™ from Bliz, Infinity always has a great ventilation for heightened comfort and safety. An in-mould construction, providing the helmet with low weight, good comfort and high safety. The size is fine tuned with the chin strap and a dial in the neck. Keep your goggles in place with a strap in the neck and start the fun. Infinity is a good model for alpine skiing and free riding.

### Technical information

- Airflow Ventilation System™
- Inmould construction, PC shell and EPS Core
- Size adjustable
- Strap Buckle to keep your goggles in place



**SMALL**  
55011-10-5254  
**Color:** Matt Black  
**Size:** S 52-54cm

**MEDIUM**  
55011-10-5458  
**Color:** Matt Black  
**Size:** M 54-58cm

**LARGE**  
55011-10-5861  
**Color:** Matt Black  
**Size:** L 58-61cm







## HEAD COVER

### Dual protection

Head Cover MIPS is a comfortable helmet with a high level of safety that does exactly what it says - it covers your head. With an in-mould construction Head Cover has a low weight, good comfort and a high level of safety. In the MIPS version your brain gets an extra level of safety in case of a crash. Keep your ski goggles in place with a strap at the back of the helmet. The size is fine tuned with the chin strap and a dial in the neck. A safe and comfortable helmet suited for alpine skiing and free riding.

### Technical information

- MIPS System
- Inmould construction, PC shell and EPS Core
- Size adjustable
- Strap Buckle to keep your goggles in place
- Air ventilation



**SMALL/MEDIUM**  
55903-00-5458  
**Color:** Matt White  
**Size:** S/M 54-58cm

**MEDIUM/LARGE**  
55903-00-5862  
**Color:** Matt White  
**Size:** M/L 58-62cm



**SMALL/MEDIUM**  
55903-10-5458  
**Color:** Matt Black  
**Size:** S/M 54-58cm

**MEDIUM/LARGE**  
55903-10-5862  
**Color:** Matt Black  
**Size:** M/L 58-62cm









# EVO



## EVO

Gates, trees, air

We have put years of work and refinement into Bliz EVO with MIPS. EVO is a versatile helmet in the highest division, developed together with a choice selection of elite athletes in ski sports. A helmet with in-mould construction with an ABS outside and an EPS inside with additional EPP reinforcements for the highest safety. The MIPS-technique gives your brain an expanded protection in the event of a crash, and the Airflow Ventilation System™ gives you an excellent airflow and comfort. The size is fine tuned with the chin strap and a dial in the neck. EVO also makes it possible to use a chin guard for slalom skiing. Are you looking for a great helmet for alpine skiing and free riding, that has top-notch comfort and safety? Then EVO MIPS is a great choice for you.

### Technical information

- MIPS system
- Chin guard ready
- Easy Strap Release
- Airflow Ventilation System™
- Hard-shell construction, ABS Shell and EPS core
- Rubber strap holder.
- Size adjustable
- A high quality Microfiber pouch is included

**SMALL**  
55808-00-5053  
**Color:** Matt White  
**Size:** S 50-53cm



**SMALL/MEDIUM**  
55808-00-5456  
**Color:** Matt White  
**Size:** S/M 54-56cm

**MEDIUM**  
55808-00-5658  
**Color:** Matt White  
**Size:** M 56-58cm

**LARGE**  
55808-00-5861  
**Color:** Matt White  
**Size:** L 58-61cm



**SMALL**  
55808-10-5053  
**Color:** Matt Black  
**Size:** S 50-53cm



**SMALL/MEDIUM**  
55808-10-5456  
**Color:** Matt Black  
**Size:** S/M 54-56cm

**MEDIUM**  
55808-10-5658  
**Color:** Matt Black  
**Size:** M 56-58cm

**LARGE**  
55808-10-5861  
**Color:** Matt Black  
**Size:** L 58-61cm



**SMALL**  
55808-CG-S  
**Color:** Black  
**Size:** S 50-53cm

**SMALL/MEDIUM MEDIUM LARGE**  
55808-CG  
**Color:** Black  
**Size:** S/M M L  
54-56cm - M 56-58cm - 58-61





# VOLT



## VOLT

### High speed carbon protection & performance

Bliz Volt. A world-class alpine speed helmet that excels in all areas, with limit-breaking performance. Volt is the result of testing in laboratories and wind tunnels, but also tests conducted with Ski Team Sweden Alpine. Volt has a shell in pure carbon fiber that offers low weight and a high level of safety. It has an EPS-core with EPP reinforcements. The helmet is also equipped with a MIPS system. The MIPS Brain Protection System (BPS) is designed to add protection against rotational motion transferred to the brain. Rotational motion affects the brain and increase the risk for minor and severe brain injuries. When implemented in a helmet, the MIPS BPS can reduce rotational motion by redirecting energies and forces otherwise transferred to the brain. Emergency Quick Release System™ makes the helmet easier to remove in the event of an accident. Volt meets and surpasses the requirements of FIS (Federation of International Skiing). This is a helmet for you if you demand the very best for alpine skiing. Volt has everything except compromises.

### Technical information

- MIPS System
- Full Carbon
- FIS Approved
- Emergency Quick Release System™
- Easy strap release.
- Rubber strap holder
- Extra liner for customized fitting
- A high quality Microfiber pouch is included



**SMALL**  
55007-10-5053  
**Color:** Carbon Black  
**Size:** S 50-53cm

**SMALL/MEDIUM**  
55007-10-5456  
**Color:** Carbon Black  
**Size:** S/M 54-56cm

**MEDIUM**  
55007-10-5658  
**Color:** Carbon Black  
**Size:** M 56-58cm





## RAID

### High speed protection

If safety is your top priority in a helmet - Raid is the choice for you. Raid meets the high requirements of racing helmets set by FIS (Federation of International Skiing). A hard-shell construction with an outer shell made from ABS, and an EPS core with EPP reinforcements. In case of an accident the Emergency Quick Release System™ makes it easy to remove the helmet. Airflow Ventilation System™ gives you top-class ventilation at any speed. Raid also has a detachable neck pad, a rubber strap holder and the option of mounting a chin guard. For top level performance in alpine skiing and freeriding, Raid is the right model when safety is your main focus.

### Technical information

- FIS Approved
- Chin guard ready
- Airflow Ventilation System™
- Emergency Quick Release System™
- Easy strap release
- Hard-shell construction, ABS Shell and EPS core
- Rubber strap holder
- Extra liner for customized fitting
- A high quality Microfiber pouch is included

**SMALL**  
55601-00-5054  
**Color:** Shiny White  
**Size:** S 50-54cm

**MEDIUM**  
55601-00-5458  
**Color:** Shiny White  
**Size:** M 54-58cm

**LARGE**  
55601-00-5861  
**Color:** Shiny White  
**Size:** L 58-61cm



**SMALL**  
55601-10-5054  
**Color:** Matt Black  
**Size:** S 50-54cm

**MEDIUM**  
55601-10-5458  
**Color:** Matt Black  
**Size:** M 54-58cm

**LARGE**  
55601-10-5861  
**Color:** Matt Black  
**Size:** L 58-61cm



**SMALL & MEDIUM**  
55706-CG  
**Color:** Black  
**Size:** S 50-54cm & M 54-58cm

**LARGE**  
55706-CG-L  
**Color:** Black  
**Size:** L 58-61cm





# PROTECTIVE SPORTS GEAR FOR ACTIVE PEOPLE



Bliz is a registered trademark of  
Future Eyewear Group Sweden AB  
[www.bliz.com](http://www.bliz.com)

Future Eyewear Group Sweden AB

Motorgatan 1  
44240 Kungälv  
Sweden

+46 303 24 33 30  
[customerservice@future.se](mailto:customerservice@future.se)  
[www.future.se](http://www.future.se)